

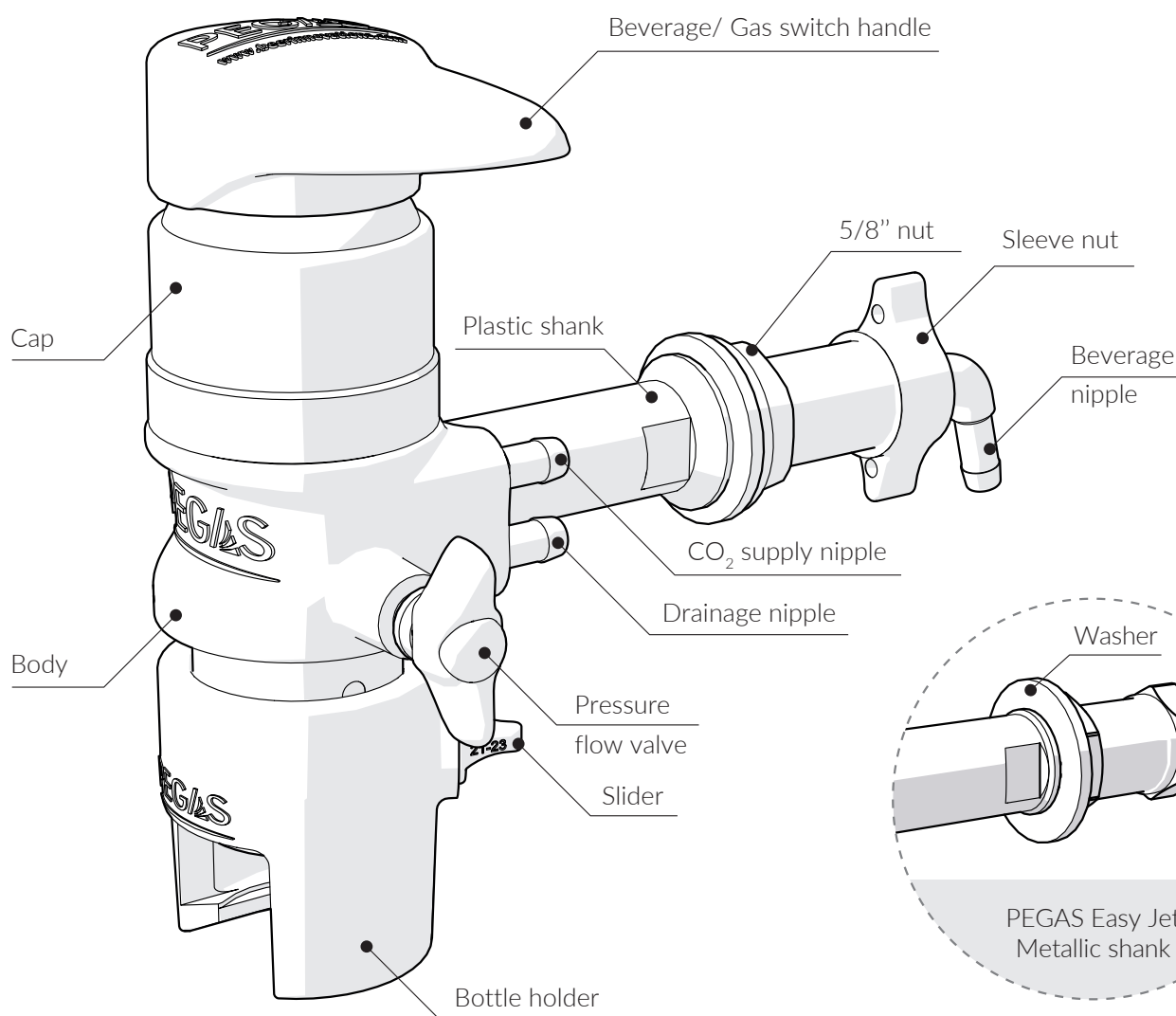
PEGAS[®]

Easy JET

PEGAS Easy Jet is intended for fast foam-free dispensing of foamy and/or carbonated beverages (including beer) from pressurized containers (kegs) into plastic bottles with PCO 1810/1881 or BPF bottle necks.

Dispensing is based on the counter pressure method. This method ensures foam-free dispensing which preserves beverage quality when storing sealed bottles for long periods.

**The use of new plastic bottles is recommended for beverage dispensing.
No glass bottles are allowed!**



Technical Data:

Filling capacity	45-120 L/hour*
CO ₂ pressure when supplied to a keg	0,15-0,25 MPa
Weight	0,5 (0,6) kg**

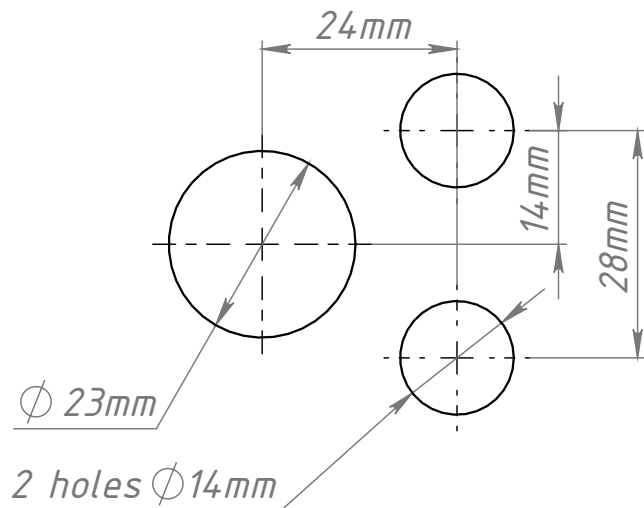
*Estimated filling speed under the condition of filling 1.5 L bottle and beverage temperature around 6°C. ** Corresponds to the PEGAS Easy Jet Metallic.

Detailed information about the filling process, installation scheme, maintenance and warranty conditions are available at www.pegasbeer.com

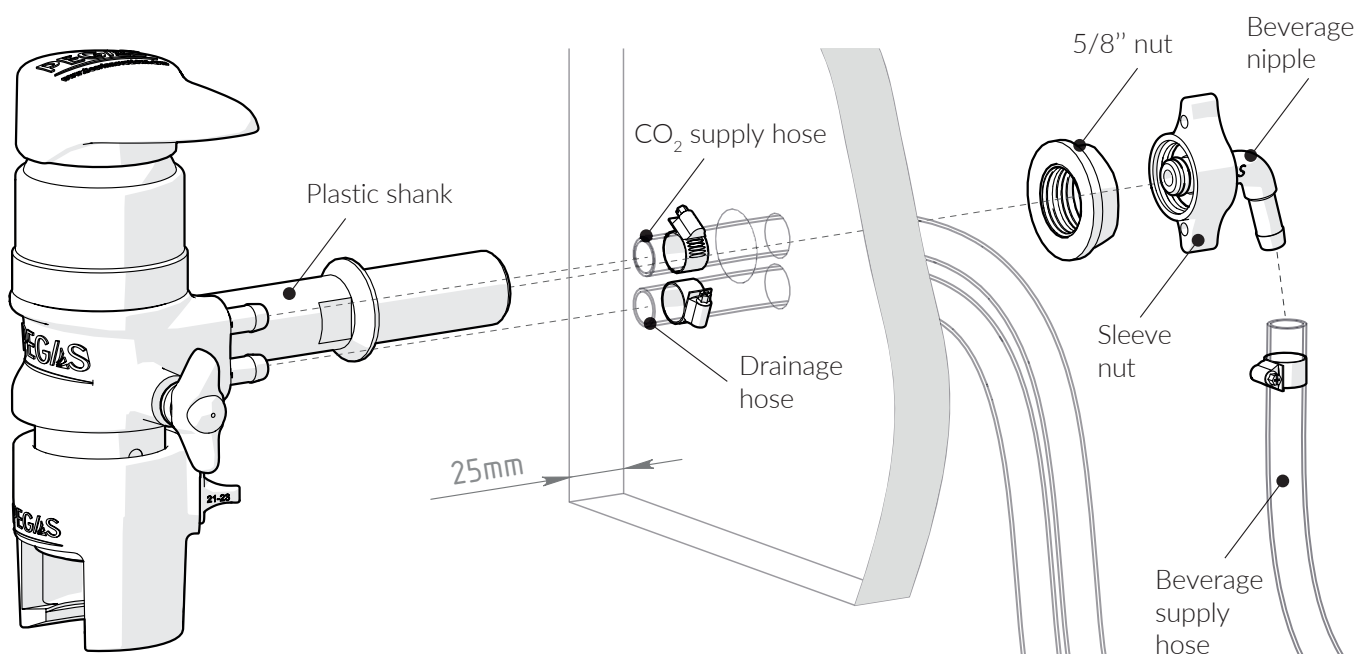
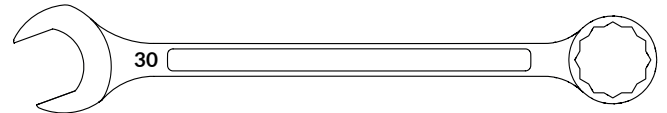
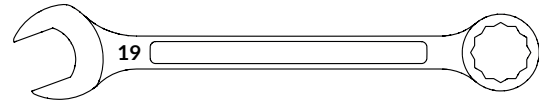
Producer's contact details are on the package.

The warranty period is 2 years.

Assembly and installation



1. Make mounting holes in the wall cording to the scheme.



2. Use a 19 mm open-end wrench to screw the shank into the threaded hole of the body (5/8" thread). Be sure to have a gasket in place beforehand.
3. Insert the shank into the wall mounting hole. The wall thickness should not exceed 25 mm.
4. On the inside of the wall, screw a 5/8" nut onto the shank. Use S19 and S30 wrenches to fix the unit in an upright position.
5. Put the sleeve nut on the Beverage nipple. Choose the required direction and insert the Beverage nipple into the shank. Tighten the sleeve nut by hand up to the stop.
6. Put the Beverage hose (inner diameter of 7 mm) on the Beverage nipple. Fix the hose with the clamp (not included to the package).
7. Place the gas and drainage hoses in the mounting holes in the wall.
8. Put the CO₂ gas hose on the upper nipple of the device and the drainage hose on the lower nipple. Fix the hoses with clamps (not included to the package).

Attention!

Do not use pliers to install clamps.

Excessive force may cause nonhermeticity.